

Supporting ...

Thin films for Solar Energy and Catalysis

Advanced Nano-imaging and
Nanotechnology

Novel Drug Design and Synthesis

Advanced Protein Analysis, Function,
and Physical/ Chemical Structure

Basic Compositional and Structural
Analysis of large and small molecules

Advanced Systems for Energy Storage

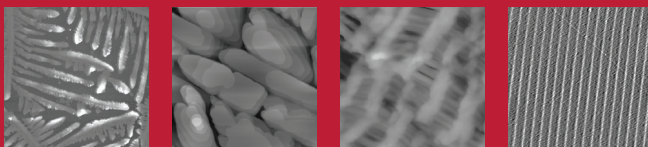
Biological Signaling and Cell Migration

Environmental Analysis and Systems
Studies

Chemical and Biochemical Sensors
and more



University of Arizona
Department of Chemistry and Biochemistry
Director, Dr. Brooke Beam Massani
bbeam@arizona.edu
520-621-3395



CBC.ARIZONA.EDU/RSS



THE UNIVERSITY OF ARIZONA
COLLEGE OF SCIENCE
COLLEGE OF MEDICINE TUCSON

Chemistry
& Biochemistry

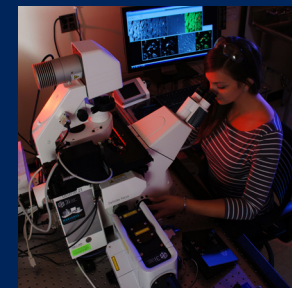
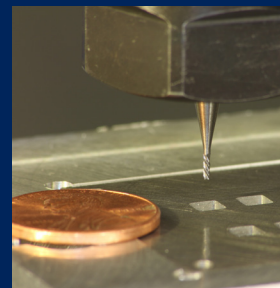
DESIGN

- ▶ **CBC Machine Shop**
Lee Macomber
621-2860 | leem1@arizona.edu
Ed Autz
621-2860 | eaautz@arizona.edu
- ▶ **Scientific Glass Blowing**
Charlie Amling
621-6365 | ccamling@arizona.edu
- ▶ **Electronics Facility**
Dr. Kevin Bao
621-2830 | kbao@arizona.edu
Justan Klaus
621-2830 | jklaus@arizona.edu

ANALYTICAL SERVICES

- ▶ **Nuclear Magnetic Resonance (NMR)**
Dr. Jixun Dai (small molecule)
621-8146 | dai@arizona.edu

Dr. Vlad Kumirov (biomolecule)
621-8243 | kumirov@arizona.edu
- ▶ **Surface Science/Photoelectron Spectroscopy**
Paul Lee
621-8241 | paull@arizona.edu
- ▶ **X-Ray Crystallography**
Dr. Andrei Astachkine
621-9968 | andrei@arizona.edu
- ▶ **Nano-Scale Imaging**
Dr. Brooke Beam Massani
621-3395 | bbeam@arizona.edu
- ▶ **Electron Spin Resonance (ESR)**
Dr. Andrei Astachkine
621-9968 | andrei@arizona.edu



Research support and advanced analysis for
the entire university community

Close ties with Tucson's technological
businesses community

Innovative custom scientific instrument design
and construction capabilities

Expertly staffed in all major areas with award
winning research specialists

Unique capabilities for nano-imaging, thin
film growth and analysis, electron spin
resonance, and clean room technologies

Team approach toward problem solving

Strong support for university educational
mission and outreach

